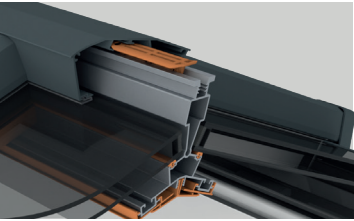


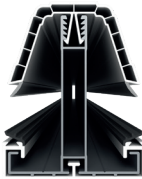
PVCu Lantern



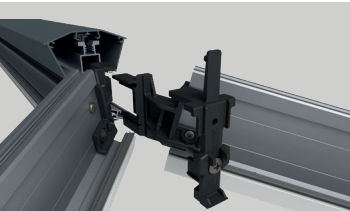
Thermal undercladding
Provides a thermal break at the ridge

High performance gaskets

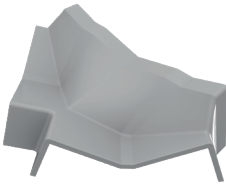
Thermal clips
Isolating polymer and an air gap creates a thermal barrier on the ridge



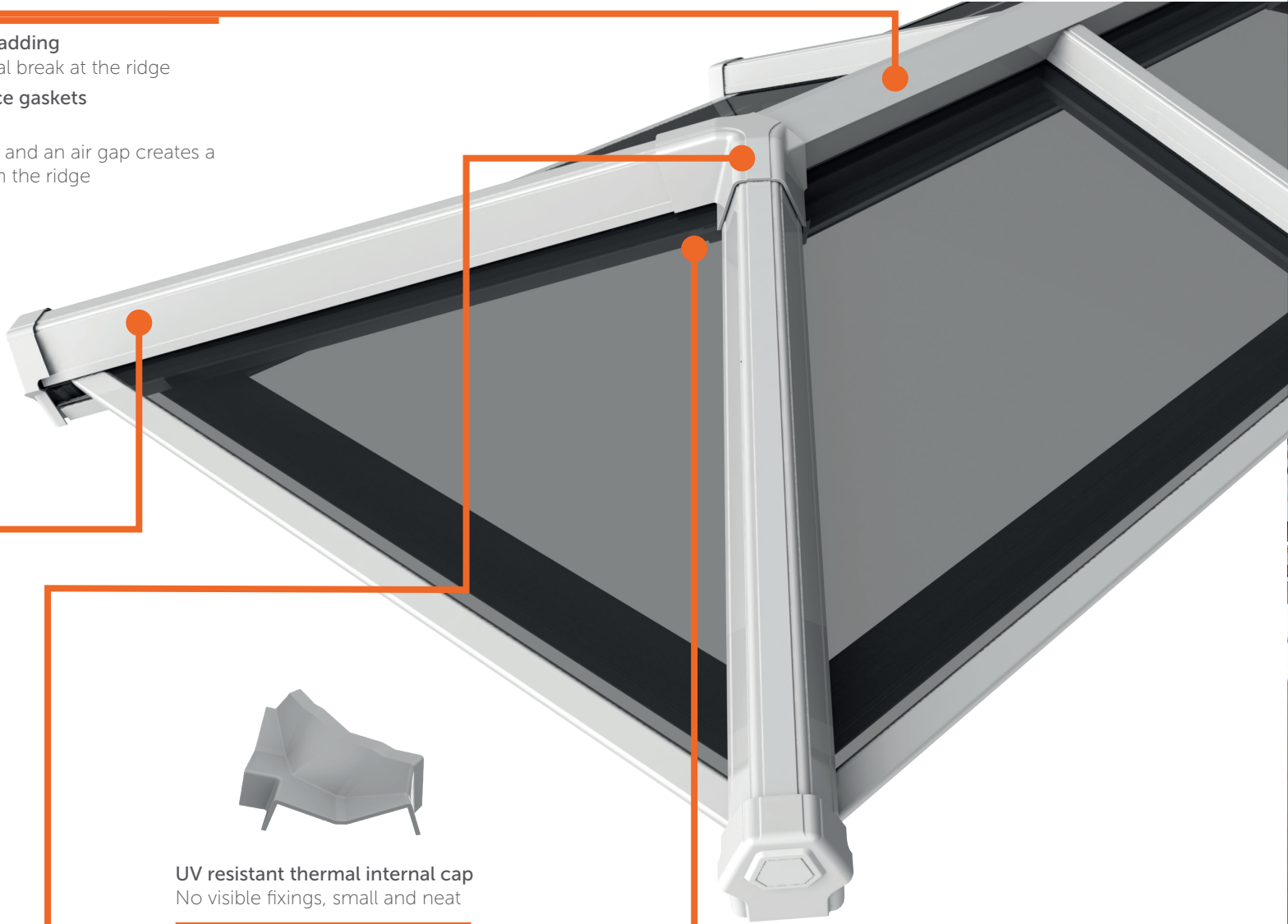
Chambered PVCu top caps



Easy fit glass fibre reinforced ridgeLOCK



UV resistant thermal internal cap
No visible fixings, small and neat



High quality at low prices

PVCu Lanterns



Natural light, neat design

A Wendland roof lantern provides a stunning focal point for any kitchen, living room or dining room. Designed to draw plenty of daylight into your room with its 20° pitch, a Wendland lantern makes your new room bright and airy. Thanks to a strong ridge the Wendland lantern has less bars than other lanterns and with a host of clip-on features there are no visible fixings. Put simply, this means that the lantern looks both neat and stylish.

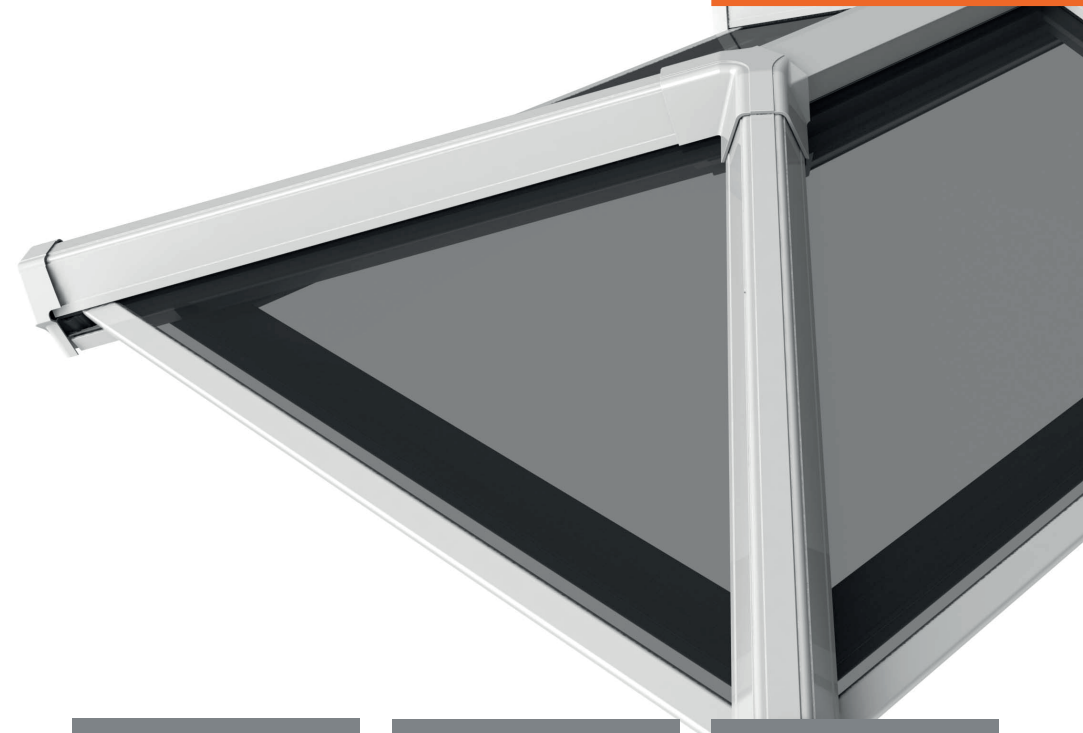
Wendland lanterns are packed with thermal features to avoid condensation build-up. From the thermal rider rail to the thermal clips, these features combine to ensure excellent performance, especially important in a kitchen where heat levels can change quickly.

Made to measure, the lanterns are perfect for any flat roof extension or orangery and are available in aluminium (grey, white or black) or PVCu (grey or white).

Fitter friendly

Wendland roof lanterns are designed to be easy and fast to fit so you can move in to your new room quickly reassured by the high quality of a Wendland lantern.

- Unique pre-assembled ridgeLOCK system
- Clip-on ridge end covers
- Pre-fitted thermal clips
- Easy-fit clip-on cappings



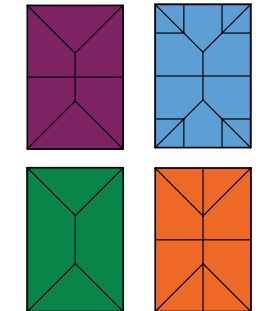
Your own space



Lantern Design: Wendland lanterns are made to measure and supplied with the least number of rafters as shown below.

Projection

	1000	1500	2000	2500	3000	3500	4000	4500
750								
1000								
1500								*
2000								*
2500								
3000								

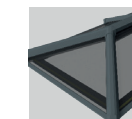


This is for a maximum characteristic snow load of 0.8kN/m² or maximum site wind load of 1.0kN/m². More bars may be needed for higher wind and snow loads. Higher specifications can be met on request. ** Additional transoms required on ridge. *This size is possible but please contact R & D Technical for advice.

Material Finish: Choose from aluminium or PVCu lantern.

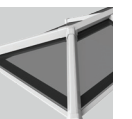
Aluminium Lantern

Choose black, white or grey external and white or grey internal finish.



PVCu Lantern

Choose grey or white internal or external finish.



Glass: Choose either blue or neutral Wendland Glass.

Feature	Blue	Neutral
Light transmission: % of light transmitted through the glass	52%	45%
Solar rejection: The proportion of the sun's heat that is rejected	60%	60%
U-Value	1.2	1.2
Self cleaning	✓	✓
UV protection: % of suns UV rays that are rejected	83%	78%
Toughened	✓	✓
Argon filled cavity	✓	✓
Warm edge spacer	✓	✓
Specialist roof glass	✓	✓
Guaranteed for 10 years	✓	✓

Wendland lanterns can also be supplied unglazed if you would prefer to choose a different type of glass.



Neutral

Blue

✓
Clip-on features
– fast to fit

✓
RidgeLOCK - perfect
fit every time

✓
Simple neat
design

✓
Less bars than
other lanterns

✓
No visible
fixings

✓
High thermal
performance

High quality at low prices

Job No. 6011 Code: WDLAL001

Wendland.uk.com