

FIVE-STAR **PERFORMANCE**, FIVE-STAR **STYLE**



Stellar is the new aluminium system with the **slimmest sightlines on the market**

It's designed for **high performance** and to be **simple to fabricate and install**. Stellar breaks new ground – it's cost-effective, but its aesthetics are world class and it delivers everything the buyer wants. Welcome to a true five-star system.

Contents



- 04 Why Stellar?
- 06 Stellar by name, stellar by nature
- 07 The Epwin Window Systems advantage
- 08 The Stellar performer
- 10 The simplest fabrication and speedy installation
- 11 The Stellar reverse butt joint



- 12 **The Stellar window range**
- 14 Flush casement window
- 16 Fully flush casement window
- 18 **The Stellar door range**
- 20 Flush door
- 22 Lift and slide door
- 24 Bifold door



- 27 Finishes
- 28 Hardware and handles
- 30 The Yale Lifetime Security Guarantee
- 32 Assurance
- 34 Five-star fabrication. Five-star performance. Five-star style.

Why Stellar?

Stellar is, simply, an outstanding system

It provides solutions to the typical problems fabricators face with other aluminium systems, enabling more efficiency and cost-effectiveness in your operation. With Stellar you could save **20% on fabrication time**, reduce your stockholding and material inputs. You could be more competitive.

Stellar is easy to install, needing no on-site scaffolding. It's quick to glaze and its unique reverse butt joint eliminates the need for dummy sashes or adaptors. The flush styling the market wants is now a reality.

Stellar is 30% slimmer than its main competitors*, delivering the best sightlines for the bright, light look everyone wants. It can reach WERs of Band A+ and has aesthetics that are at home in both contemporary and traditional properties. It is secure, low maintenance and more sustainable.



Why more and more people are choosing aluminium
 Once the preserve of the commercial sector, aluminium is rapidly gaining traction across the whole glazing market. Homeowners have seen the possibilities of a material with the strength and resilience to allow both large expanses of glass and minimal sightlines. Insulating technologies now deliver excellent thermal performance and tough finishes ensure lasting style. Aluminium is easy to care for. It's abundant and it's recyclable. It's beloved by architects and designers, and it offers everything that today's window and door buyers want.

*Based on an internally glazed GGF standard window configuration



Offers **12% more glass area**

Market-leading slim sightlines - **30% slimmer sightlines** than main competitors

Knock in bead with pre-inserted gasket which makes the system **20% quicker to fabricate**

Consistent glass lines: Profile designed to keep the glass aligned for casement and fixed lights

Innovative patent-pending reverse butt joint: fabrication without the need for dummy sashes or reverse adaptor profiles

Flush inside and out:
choice of two sashes

Easy-clean rebates

Tailed gasket to **improve thermal performance**

Stellar by name, stellar by nature



Less frame, more light

Stellar's frames are 30% slimmer than those of the closest competitor. Based on an internally-glazed GGF standard window, with Stellar, there's an extra 12% glass area.



Rapid fabrication

Based on a side-hung vent next to a fixed light, an internally glazed window can be made up to 20% faster, saving labour and power costs and increasing your production capacity.



Swift installation

Flat rebates are easy to maintain and can save a couple of minutes per sash when fitting glazing packers. Stellar's frames also have a flat back that's easier to pack when you're on site.



Reduced cost, reduced waste

Stellar uses approximately 30% less aluminium than comparable systems. It's therefore more affordable, more sustainable and less likely to generate waste.



Cleaner lines and adaptable style

Stellar has clean lines and the option of a genuine fully-flush casement. It has a contemporary style that also works with more traditional architecture. With a 36mm cill that replicates timber, it's also ideal for conservation areas.



Thermal performance

Strong aluminium sections allow large glazed areas, while advanced thermal break technology ensures no compromise on insulation. Stellar can reach a WER of Band A+ and U-values of 1.1W/m²K with triple glazing.



Shorter lead times

Stellar is supplied directly from the UK with industry-leading service levels.



More integration

Common parts across the Stellar range reduce the necessity for high stock volumes. Stellar is also compatible with PVC-U cills and trims.

The Epwin Window Systems **advantage**

Epwin has a formidable reputation in the glazing industry. It's **the largest systems house in the UK with unrivalled expertise and a product portfolio** which meets the needs of every market sector.

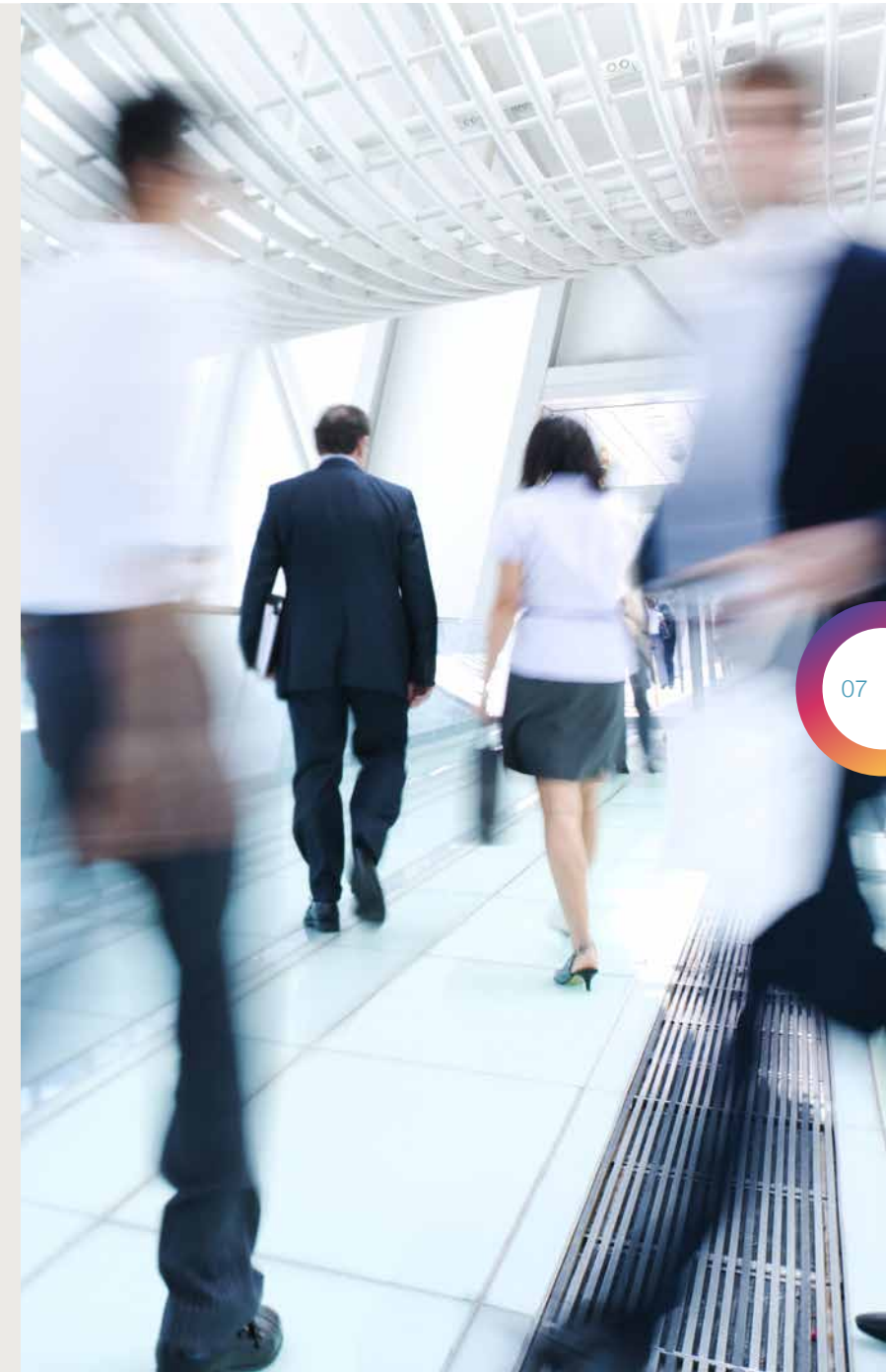
Epwin is strong. It's stable. It believes in the long-term and has invested substantially in product development, production facilities and its team, and Epwin will continue to do so. This is a business that doesn't believe in standing still.

Over more than 40 years, Epwin's innovative ideas have been game changers – a case in point is **Stellar's patent-pending reverse butt joint – and the company's commitment to customer service has helped fabricators and installers to grow.** Epwin remains a British owned and based operation, delivering daily to an extensive network of the most reputable fabricators. It's active in industry bodies and a responsible partner in many trade and environmental focused initiatives.

Epwin has led the way in manufacturing excellence, advanced technologies and efficiency in design. Recognising that many existing aluminium systems had compromises in style, security and performance, Epwin chose to develop a brand-new, **British designed system that wasn't hampered by preconceptions or tired ideas.** The brief was a system that delivered excellence, that satisfied fabricators, installers and consumers, and that would, like Epwin itself, stand the test of time.

That system is Stellar.

Epwin Window Systems



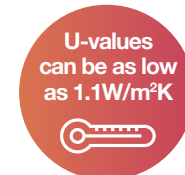


The Stellar performer

Aluminium systems have come a long way since their earliest days. Now, Stellar is pushing standards even higher. Stellar doesn't need complex polyamides or foams to meet Building Regulations. Insulation is a fundamental part of the design, not an afterthought.



WER
up to Band
A+



U-values
can be as low
as 1.1W/m²K



Air
permeability
tested to 600Pa



Water
tightness to
600Pa



Wind load
resistance to
2000Pa



Can be
double or triple
glazed

Stellar, CE Marking and U-ComplyN

With Epwin's handy U-ComplyN software, it's easy to test or obtain U-values and WER ratings. Specify the frame dimensions, the glass type, the spacers and sections used, and all the information is calculated for you. It's easy to see the best way to achieve the performance your customer wants.



The simplest fabrication and speedy installation

Great windows and doors shouldn't be hard to fabricate or install, but unfortunately, many systems don't make the job easy. With Stellar things are different. It's quick and simple to work with, but the results are **pure high quality**.

Simpler fabrication:

- Pre-inserted gaskets save time, prevent waste and keep the shop floor clear
- Unique reverse butt joint - no reverse adaptors required
- Chevrons are only required on flush sashes
- No drainage preparation on cills and no untidy drainage caps
- Casements accommodate fast-fit espagnolettes – no shootbolts required.

No tricks, no gimmicks, **just smart thinking**.

Faster installation:

- Stellar uses knock-in beads. Without wedge gaskets, glazing is faster
- Flat, easy-clean rebates make glazing packers easy to fit
- Frames are flat backed, so easier to pack during installation
- Internal glazing as standard avoids the need for scaffolding
- Thresholds can be replaced without disturbing the doorframe.

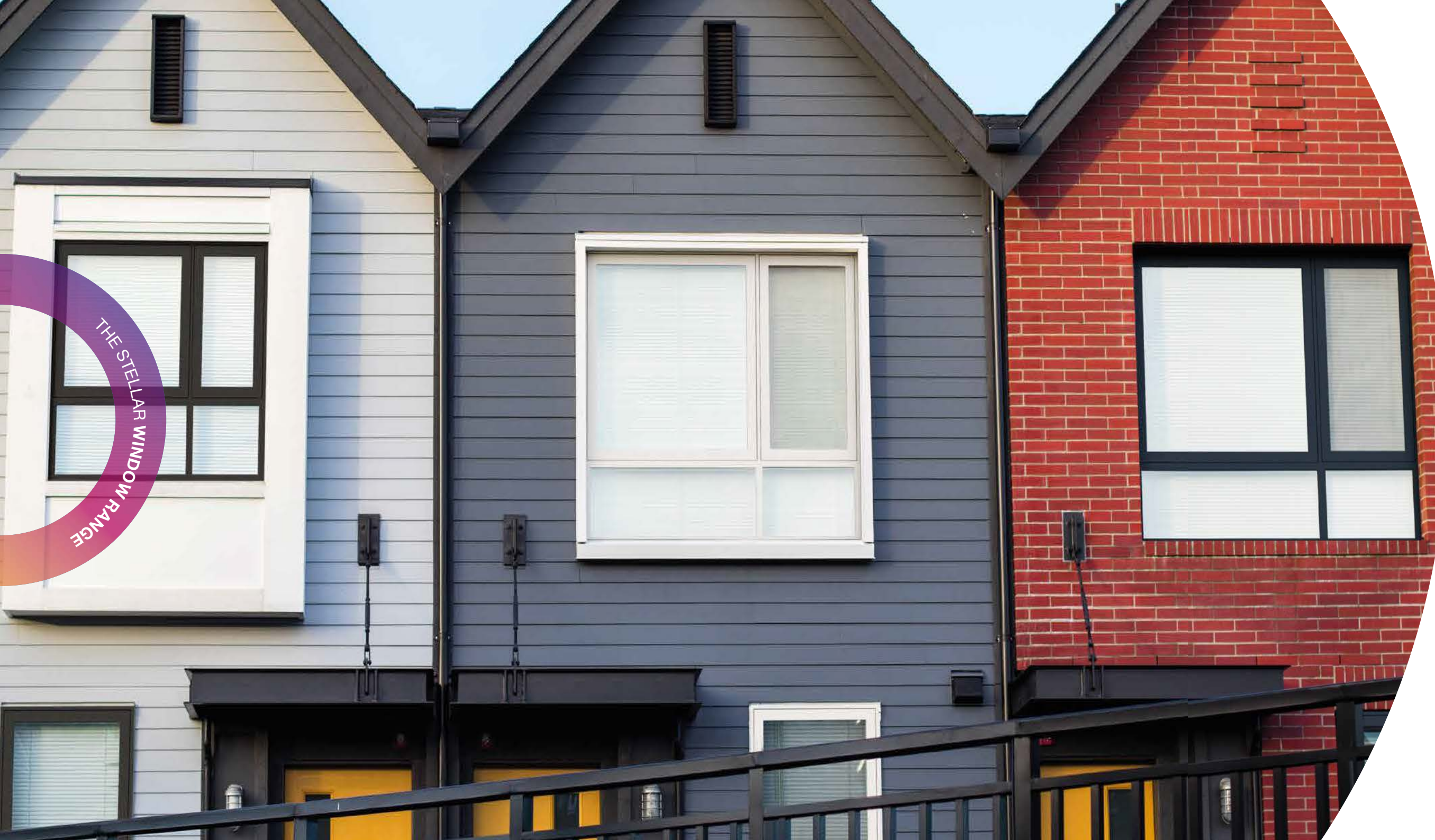
The Stellar reverse butt joint

Some said it couldn't be done. They expected that consumers, fabricators and installers would put up with the compromise of dummy sashes or reverse rebate adapters, but Epwin are expert innovators, with some of the most experienced design specialists and engineers on their team. And Epwin doesn't believe in compromise. That's why Stellar is the only aluminium system that has a reverse butt joint capability.

It's a patent-pending design that simply eliminates the complexity and expense from making internally glazed windows. What's more it's possible to avoid the problem of stepped frames. There really is a fully flush, easy to fabricate and install window on the market.

It's called **Stellar**.





The Stellar **window range**

Everything you need is included in the Stellar range. The system is complete and has dedicated ancillary products so that whatever your customer is looking for, you've got the answer.

The layout of windows – the number of fixed and opening panes, the simplicity of the lines or the extra details that give character – everything is adaptable, and every component is designed to work together.

There are two types of casement: a standard flush design with a stepped shape internally, and a fully-flush option with flush lines inside and outside. Bay and bow windows are no problem – all the assemblies needed, all the trims and all the cills are included in the Stellar system. Where astragal bars are required, Stellar has them. If you want the advantages of a two-part cill, it's yours.





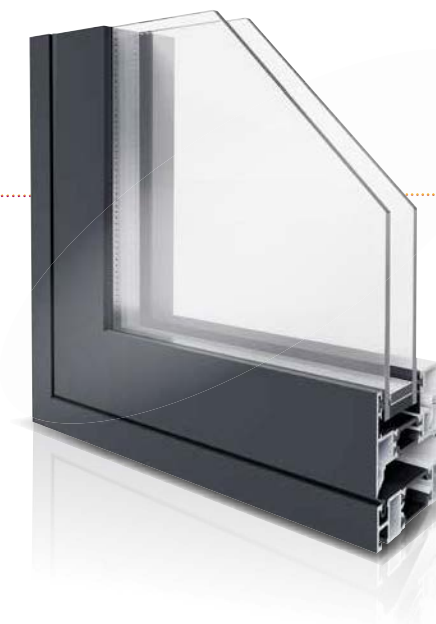
Flush casement window

Designed for a flush appearance to the exterior, finished frames have a neat step internally. The system allows for almost any arrangement of top or side-hung sashes and fixed lights, with the revolutionary reverse butt joint removing the need for adaptors and dummy sashes.

Flush casement windows accommodate advanced hardware from leading suppliers. Every hinge, espagnolette, lock and handle has been selected to be easy to work with and to deliver high security and long-term performance. Ideal for residential and commercial projects, Stellar's flush casements are available in a wide range of durable powder-coated finishes.



High performing casements, with super-slim sightlines, flush styling and fast fabrication – everything you need.



Dimensions

- Side-hung sash – max 700mm x 1300mm
- Top-hung sash – max 1200mm x 1200mm.



Performance

- WER up to Band A+ with triple glazing
- U-values as low as 1.1W/m²K
- Meets Building Regs without foams or special polyamides.



Aesthetics

- Market-leading slim sightlines
- Astragal bars
- Thicker cill to replicate timber
- Needs no dummy sashes
- Flush sash.



Fabrication

- Reverse butt joint
- Pre-inserted gaskets
- Takes fast-fit espags
- Flat rebates for easy-fit glazing packers
- Corner ties only on the flush sash
- No drain prep on cill.



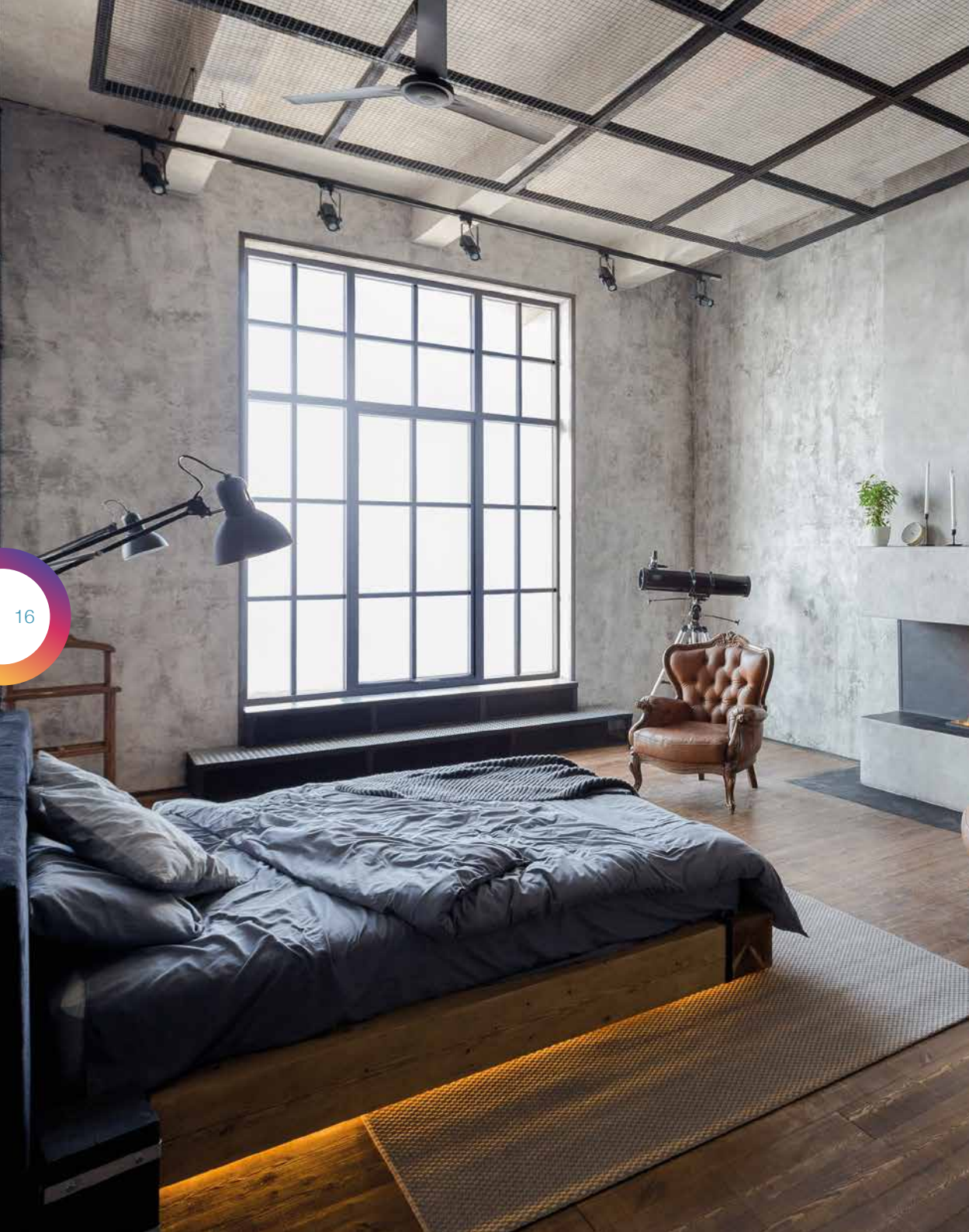
Installation

- Flat back to frames
- Flat rebates for easy-fit glazing packers
- Knock-in beads.



Guarantees

- 10-year mechanical performance guarantee
- 25-year surface paint finish guarantee
- Lifetime security guarantee on hardware.



Fully flush casement window

A true, interior and exterior, fully-flush design that makes the most of Stellar's ultra-slim styling. The advantage of the reverse butt joint allows frames of almost any layout to be made without the complexity or expense of dummy sashes or adaptors.

As with the flush casement option, hardware has been carefully selected. In addition to reliability and durability, every component contributes to the high level of security. What's more, all of these practical qualities are delivered without compromising Stellar's remarkable lines.



Dimensions

- Side-hung sash – max 700mm x 1300mm
- Top-hung sash – max 1200mm x 1200mm.



Performance

- WER up to Band A+ with triple glazing
- U-values as low as 1.1W/m²K
- Meets Building Regs without foams or polyamides
- 40mm and 45mm polyamide thermal breaks to compensate for larger sightline.



Aesthetics

- True flush sash indoors and out (no stepped frame)
- Astragal bars
- Market-leading slim sightlines
- Thicker cill to replicate timber
- Needs no dummy sashes.



Fabrication

- Reverse butt joint
- Pre-inserted gaskets
- Takes fast-fit espags
- No corner ties
- No drain prep on cill.



Installation

- Flat back to frames
- Flat rebates for easy-fit glazing packers
- Up to 44mm triple glazing
- Same bead as fixed light
- Knock-in beads.



Guarantees

- 10-year mechanical performance guarantee
- 25-year surface paint finish guarantee
- Lifetime security guarantee on hardware.



The Stellar door range

It's easy to achieve consistency in style with Stellar – every type of door is possible with this advanced aluminium system.

Stellar has been developed to be reassuringly robust in an entrance door. It's light and graceful enough for a classic French door, and its ultra slim lines ensure that both bifold doors and lift and slide patio doors offer the best possible glass to frame ratios.

Stellar is versatile. Fanlights and sidelights can easily be incorporated in doorsets. There are purpose-made midrails, a full range of cills and thresholds and every element has been tested and proven to deliver excellent long-term performance. Domestic or commercial, whatever your market, with Stellar, there's a door that's easy to install and fits to perfection.





Flush door

Stellar is a highly configurable system, ideal for standard front or rear entrance doors or for French doors. Side panels and fanlights can easily be incorporated into doorsets, and as many components are shared with the casement window, stock levels are easy to manage.

These doors also benefit from superior quality hardware. Selected for reliable performance, tested through cycle after cycle – locks, hinges, handles – every single element contributes to a secure, robust and very stylish whole.



Dimensions

- Door leaf – max 1000mm x 2400mm.



Operation

- Open-in or open-out with either full-frame or low threshold
- Part M compliant low threshold.



Performance

- U-values as low as 1.3W/m²K with triple glazing
- Meets Building Regs without foams or special polyamides.



Aesthetics

- Slim sightlines
- Flush indoors and out.



Fabrication

- Pre-inserted gaskets
- Sash mechanically jointed.



Installation

- Flat back to frames
- Flat rebates for easy-fit glazing packers
- Thresholds can be replaced with frame in situ
- Knock-in beads.



Guarantees

- 10-year mechanical performance guarantee
- 25-year surface paint finish guarantee
- Lifetime security guarantee on hardware.



Lift and slide door

Stellar is perfect for lift and slide patio doors. With its incredibly slim profiles it makes the most of the glass area, delivering the coveted light and airy feel and clean aesthetics. The system's strength allows sash widths up to 3 metres wide via a range of interlock sizes to achieve the best combination of sightlines and size capability - ideal for applications where a wide opening is desirable.

Hardware is a crucial part of any sliding door, and Stellar's lift and slide doors boast some of the very best, ensuring smooth operation even on the largest sashes. Fitting the hardware is remarkably simple, but with four locking points on the gearing, the result is a highly secure door.



Like every other part of the Stellar range, the lift and slide door has been developed for quick, simple fabrication, and its gearing selected for easy installation and years of trouble-free use.



Dimensions

- Sash size – min 750mm (W) x 1200mm (H), max 3000mm (W) x 2600mm (H)
- Max sash weight 300kg
- Overall width max 6500mm.



Configuration

- 2, 3 or 4-pane layout
- Interlock options 96mm, 68mm or 50mm
- Glazing options 28mm, 36mm or 44mm
- Wide choice of handle colours.



Performance

- Can achieve Door Set Energy Rating C
- U-values as low as 1.4W/m²K
- 4-point locking and PAS24 standards
- Weather performance to BS6375-1
- Meets Building Regs without foams or polyamides.



Aesthetics

- Slim sightlines
- Full range of ancillaries.



Fabrication

- Pre-inserted gaskets
- Sash can be crimped or mechanically jointed
- Outer frame can be mechanically jointed.



Installation

- Knock-in beads
- Finished floor level trim.



Guarantees

- 10-year mechanical performance guarantee
- 25-year surface paint finish guarantee
- 10-year mechanical guarantee on hardware.



Bifold door

Stellar has all the strength a bifold needs and packs a real punch with its ultra-slim sashes. Full-length polyamide thermal breaks ensure this beautiful door is also highly insulating.

Bifold doors need exceptional hardware and the Stellar components include double hinge fixings for reliable long-term performance, multipoint locking to the main door and shootbolts for high security. There's also an outstanding track and roller system that's easy to operate and easy to maintain.

Super-tough polyester powder coating resists damage from scuffs and the day-to-day knocks. Add to that swift fabrication, easy installation and a wide range of options and this is a bifold door that can go anywhere.



Dimensions

- Up to seven sashes
- Sashes – min 750mm, max 1000mm (W). Max height 2400mm
- Maximum weight of 120kg
- Overall width max 6300mm.



Configuration

- Multiple options including left, right and both sides stacking
- Choice of access door position
- Wide choice of handle colours.



Performance

- Can achieve Door Set Energy Rating C
- U-values as low as 1.1W/m²K
- 28mm double glazing as standard
- Double hinge fixing for reliable long-term performance
- Multipoint locking for the main door and shootbolts for high security
- Parallel stainless-steel tracks for ease of operation and stability
- Quad stainless-steel rollers with wiper brushes to spread the load and resist debris build-up
- Robust corner cleat system for strong precise corners
- Weather performance to BS6375-1
- Meets Building Regs without foams or special polyamides.



Aesthetics

- Slim sightlines
- Suites with other window & door systems - common aesthetics.



Fabrication

- Sash and outer frame mechanically jointed.



Installation

- Flat back to frames
- Easy to glaze
- Knock-in beads.



Guarantees

- 10-year mechanical performance guarantee
- 25-year surface paint finish guarantee
- Lifetime security guarantee on hardware.





Finishes

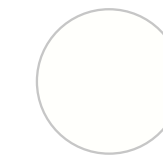
Colour can make a huge difference to the overall success of a glazing project, and in architectural terms, it can be a fundamental part of the whole. That's why Stellar's colour palette isn't limited.

Different eras and building materials demand different finishes, sometimes subtle, sometimes bold. We stock the most popular shades, and we'll keep reviewing that range as trends change over time.

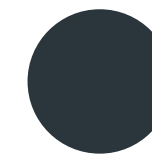
As well as our selection of stocked colours, we can supply profiles finished with any gloss level, in any RAL colour, or any dual colour combinations. There really is no limit to the colours you can choose, enabling you to satisfy more customers and fulfil the aesthetic requirements of more construction projects.

All Stellar's aluminium sections are finished with a tough, durable polyester powder coat, certified to the Qualicoat standard, which surpasses European requirements. In addition, we can supply special marine-grade finishes for more challenging environments.

Standard Stock



Signal White
Flat/Matt
RAL 9003



Anthracite Grey
Flat/Matt
RAL 7016



Anthracite Grey/Signal White
Flat/Matt
RAL 7016 / 9003

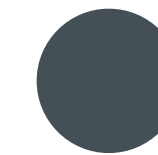
Non Stock



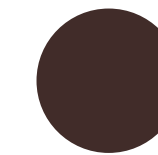
Cream
Flat/Matt
RAL 9001



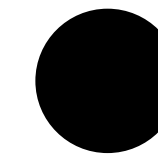
Agate Grey
Flat/Matt
RAL 7038



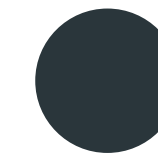
Slate Grey
Flat/Matt
RAL 7015



Chocolate Brown
Flat/Matt
RAL 8017



Jet Black
Flat/Matt
RAL 9005



Anthracite Grey
Textured
RAL 7016

Hardware and handles

Stellar's quality demands an equally high-quality range of hardware.

We have selected products known for their reliability, ease of use and durability, and every item in the range has undergone rigorous testing. The range includes styles and finishes to suit all projects.



Casement window

Stellar's Flush and Fully Flush windows utilise high-quality hardware throughout. Friction stays are robust and reliable. Espags have been selected for ease of fitting, PAS24 compliance and corrosion resistance. Handles are proven, stylish and benefit from key locking and easy operation. Hinge protectors and cavity locking blocks are simple to adjust and easy to work with. For extra piece of mind all PAS24 compliant casement windows come with Yale's Lifetime Security Guarantee.



Flush door

Security, weather protection and ease of use were paramount in the selection of hardware for Stellar's flush and flush French doors, but style hasn't been forgotten – handles suite perfectly with window handles and letterplates have clean modern styling and an immaculate finish. Doors fitted with the Yale 3-star cylinder and conforming to PAS24 carry the Yale Lifetime Security Guarantee. All door hardware is easy to fit, quick to adjust and proven for long-term performance.



Lift and slide door

The handle and gearing for Stellar lift and slide doors carefully balances the needs of safety and security with ease of operation. The system benefits from an integrated airgap. The bogie wheels are easy to fix and ensure smooth gliding action even with substantial sash weights. The market-leading HS Portal gearing system is tried and tested over decades and is warrantied for 10 years of trouble-free operation and, with four locking points, adds extra reassurance. There's also a soft-close and handle damping option for safety in use.



Bifold door

Hardware and door furniture have been chosen for consistent styling across the Stellar range. Every element is robust and reliable. Double hinge fixings combine with multipoint locking for the main door and there are shootbolts for high security on each folding leaf. The track system is stainless steel. Backed with quad stainless-steel rollers and wiper brushes that prevent debris build-up, the result is a bifolding door that's both stable and easy to open, but also highly secure when it's closed. Bifold doors fitted with the Yale 3-star cylinder and conforming to PAS24 boast the Yale Lifetime Security Guarantee.

Colour options include:



White



Satin Silver



Black



Chrome

The Yale Lifetime Security Guarantee

Yale is acknowledged as the leading home security brand, with 98% brand recognition. Yale not only has a reputation for excellence but also offers a fantastic Lifetime Security Guarantee on all PAS24 compliant windows and doors, which entitles homeowners to:



**Up to £1000
towards home
insurance excess**

in the unlikely event of a break-in at your customer's home.



**Up to £1000
towards repairs
or replacements**

of any failed Yale components.



**£1000
compensation**

if a break-in is caused by the failure of a Yale component.



**Up to £250 refund
on call-out fees**

if a home needs to be secured after a break-in resulting from a failed Yale component.

Terms and conditions apply.



The world's favourite lock since 1843



Assurance

Every part of the Stellar range has been developed with security in mind.

From the earliest stages of draft design, there has been a commitment to producing a highly accredited system, built to offer the reassuring long-term protection and security consumers expect.

The robust nature of Stellar's sections is a key component of this strategy. This system is resistant to attack and meets the UK Police Secured by Design Scheme standards. PAS24 standards are – of course – no problem for Stellar. The system conforms to the highest standards throughout with every component selected to enhance security.

Stellar combines strength, resilience and the innovative reverse butt joint design to keep homes safe and secure. It has also been designed to accommodate the latest high-security hardware, espagnolette locking systems, multipoint locks and shootbolts.

Secured by Design



Official Police Security Initiative





Five-star **fabrication.** Five-star **performance.** Five-star **style**

Stellar is the innovative new aluminium system that sets new standards. It revolutionises aluminium windows with its unique reverse butt joint. It's faster to fabricate, saves materials, and reduces stockholding. It's adaptable, attractive, simple to install, and maintenance requirements are minimal.

Stellar has clean contemporary lines but is ideal for conservation areas. With triple-glazing, it can deliver A+ rated performance. It's Kitemarked and is Secured by Design accredited. It has the slimmest sightlines, offers the best glass-to-frame ratio and is more sustainable, consuming fewer resources in its production.

Stellar is the aluminium system designed for consumers, installers and fabricators.

It is, simply, a star.

stellar[™]
ALUMINIUM SYSTEMS



Discover star quality with... **stellaraluminium.co.uk**



Stafford Park 6, Telford TF3 3AT

0845 300 9356

talk@stellaraluminium.co.uk

www.stellaraluminium.co.uk

Epwin Window Systems

Stellar Aluminium Systems is an aluminium profile system supplied to local independent manufacturers and installers who contract to install windows and doors. Stellar Aluminium cannot be held accountable for manufacture or installation by independent companies. All information in this publication is provided for guidance only and is given in good faith. As it is company policy to continually improve products, methods and materials, changes of specification may be made from time to time without prior notice. This statement does not affect your statutory rights. © Stellar Aluminium Systems. Part of the Epwin Group Plc. STE16521



