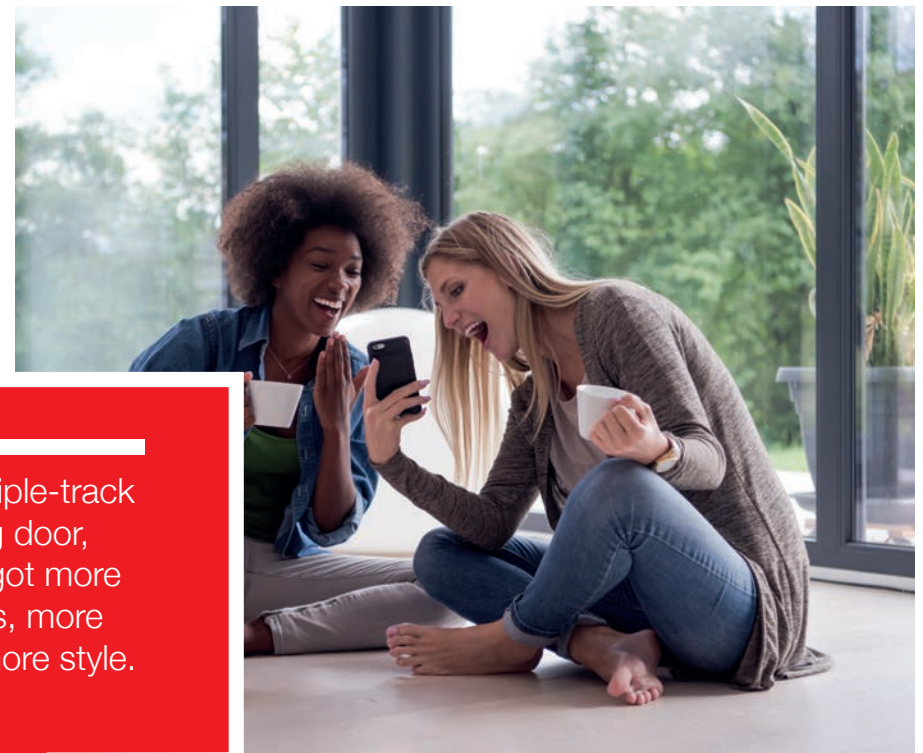






With a Triple-track
sliding door,
you've got more
options, more
space, more style.



Why Triple-track

Our new Triple-track system offers wider expanses of glass between framing than a conventional patio door, providing a clearer panoramic view. With either two or four sliding sashes that stack neatly behind each other when opened, they deliver that open-house feel – even for smaller frame sizes.

And unlike doors with folding sashes, they're neat and practical, simple and streamlined. They don't encroach on precious space – indoors or out. What's more you get the clear wide-open aperture alongside reliable, trouble-free and almost effortless operation.

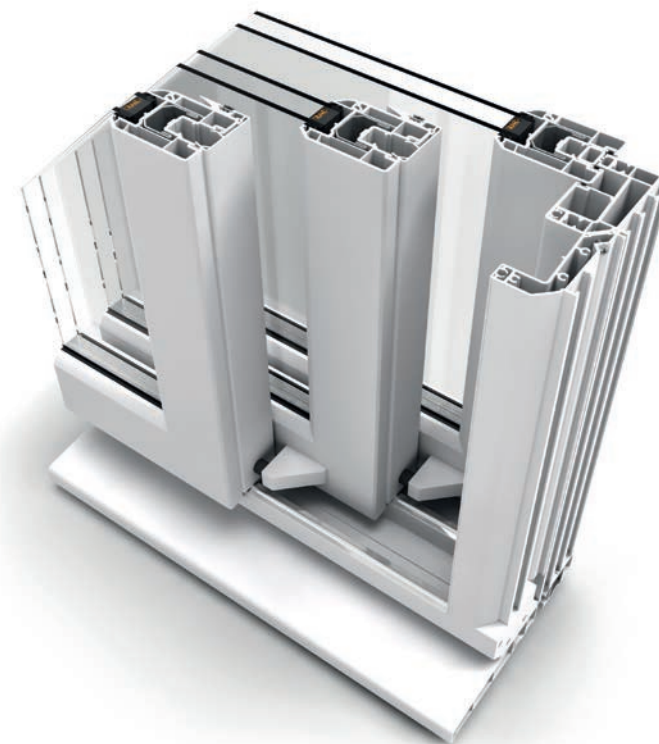
The no-fuss way to a **perfect match**

Our Triple-track system is designed to offer style that's consistent with other windows and doors. No more harsh, industrial aesthetic – it's now easy to match PVC-U. There's a wide range of finishes, and a choice of chamfered or ovolo-shaped sash upstands. And because we always think things through, our Triple-track system works perfectly with standard cills and frame packers. The result is straightforward, simple installation.

Pure quality, exceptional value

We've combined top-quality, proven and cost-effective PVC-U systems with rigid aluminium materials to create a Triple-track door that delivers a robust and high-performing alternative to multi-opening doors.

Profiles are durable, impact resistant, easy to care for. They are designed to resist the cold, the heat, the wind and the rain, year after year.



Stylish and **perfectly engineered**

It's the only approach
we know

04



Key benefits and options

Maximum aperture width up to 6 metres

Up to 25% additional open space compared to conventional sliding doors

Doors are reinforced with hot-dipped galvanised mild steel

Choice of handle colours: white, gold, brass, chrome, black and silver

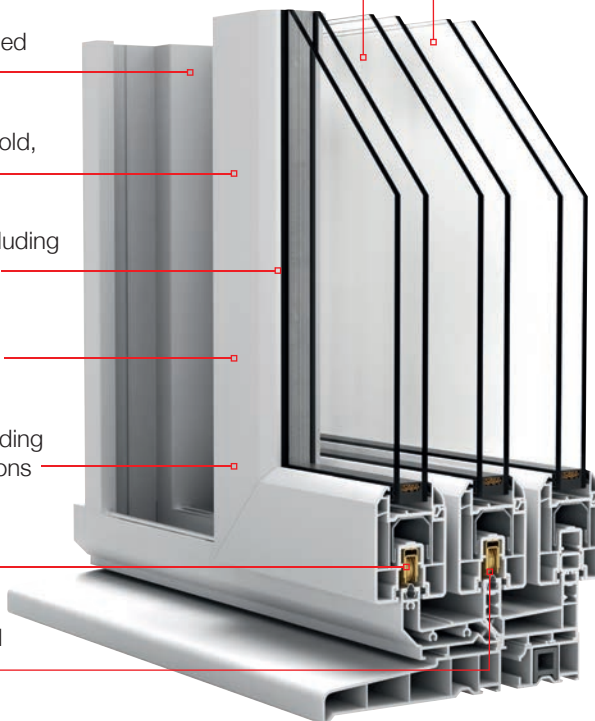
Full range of ancillary products including cills, frame packers and add-ons

Up to 28 colours and finishes, including grained and flat textures

6-point locking system for outstanding security on all standard specifications

Edge-located rollers for easy adjustment and smooth glide

Stainless-steel tracks for structural integrity and corrosion resistance



Large apertures – no problem

- ✓ For a start, it's less expensive.
- ✓ There are fewer moving parts so there's far less chance of breakdowns.
- ✓ There's nothing complicated about operation – just a smooth single motion to open or close.
- ✓ We offer a mechanically jointed version, so transport – even to tricky sites – shouldn't be difficult.
- ✓ The exoskeletal aluminium system confers the high level of rigidity that large frames need.
- ✓ For a similar sized door, you get an improved glass to frame ratio with a Triple-track.



Adaptable style

Our Triple-track door is can be customised to suit any style of architecture and almost any taste. What's more, it's ideal where a match with PVC-U windows and doors is required. There are both chamfered and ovolo shaped options and a full-range of foiled finishes. Complete consistency across a property is now simple to achieve.

Colours

Choose from a market-leading 28 colours and finishes, including grained and flat textures. Specific dual colour options are also available to order.

Handles

Our handles are chosen for their high quality and reliable, long-term performance. Finishes include white, gold, brass, chrome, black and silver.

Layout

3 panels: 1 fixed – 2 sliding.

6 panels: 2 fixed – 4 sliding.

Dimensions

Maximum aperture width 6 metres.

Maximum height: 2360mm.

Colour options





A **Triple-track door** should offer more than great aesthetics. It should protect...

Thermally efficient

Our new Triple-track door can be glazed with high-performance, 24mm or 28mm sealed units. By specifying the appropriate glass, with surface treatments for solar protection or low emissivity, you can ensure a comfortable environment all year round.

The rigid, 70mm multi-chamber outer frame is made from an insulating PVC-U-aluminium composite which reduces thermal transmittance across the frame. Our highly effective seals eliminate drafts to keep homes warm and cosy.

Safe and secure

Homes don't feel like homes if they don't feel secure, so we've taken a good look at every part of our design and engineering to ensure that not only is it up to the job but also that it's safe and helps to keep out unwanted visitors.

Triple-track frames are robust with rigid steel reinforcing, and our anti-lift systems ensure that when a Triple-track door is locked, panes cannot be lifted out of the frame. We've selected highly secure locking systems, which can accommodate advanced anti-bump, anti-drill and anti-pick lock cylinders.

PVC-U itself is known as very safe material. It's tough and impact resistant and of course, all our Triple-track doors use toughened glass as standard.





“

We wanted a door with the 'WOW' factor, something sleek and streamlined that would make our home stand out. We wanted that, but we also wanted comfort and peace of mind.

”

It couldn't **be simpler**

Easy to **operate**

To unlock

Insert the key in the cylinder and rotate to unlock the mechanism. Depress the lever behind the handle to disengage the bolts and cams, then slide the door(s) open.

To lock

Slide the door(s) to the fully closed position. Lift the lever behind the handle to engage the hook locks, then turn the key to deadlock the door.

10



“
We've put the thinking into the design, so you don't have to find the instruction manual every time you fancy a breath of air
”

Easy to **care for**

Looking after a Triple-track door is simple. A few easy steps and it will stay looking beautiful and operating smoothly for many years.

No specialist tools, skills or equipment are required, but when using cleaning and lubricating products, follow the manufacturer's instructions and always test a small area of the product in an obscure location first.

Cleaning the frames

1. Clean the internal and external surfaces of the frame to remove any grime and atmospheric deposits, using a mild detergent solution and a soft cloth. Take care not to disturb the weatherseals.
2. Rinse with water.
3. If there are any stubborn marks use "Solusafe" liquid cleaner, or a non-abrasive proprietary cleaner.

Don't use:

- ✗ Solvent-based products
- ✗ Abrasive materials
- ✗ Bleaching agents
- ✗ Wire wool or wire brushes
- ✗ Metal polish
- ✗ Cream cleaners which contain scouring agents.

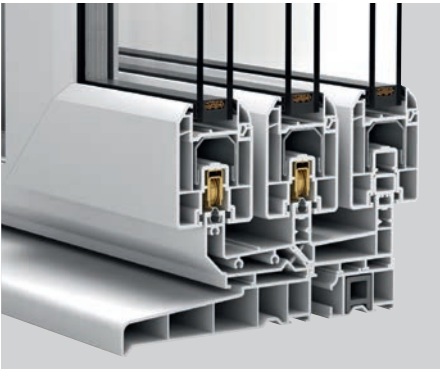
Do use:

- ✓ Soft cloths
- ✓ Mild liquid detergent
- ✓ For stubborn marks use "Solusafe" liquid cleaner.



Tracks

Keep tracks permanently free of dirt and obstruction. A soft brush or vacuum cleaner should work well.



Cleaning the glass

Glass can be scratched, so removing rings is advisable. Use a soft cloth and a liquid detergent solution to remove any external grime, then rinse thoroughly. Proprietary glass cleaners can be used to finish.

If the glass surfaces have decorative leadwork, take care not to dislodge it by using excessive pressure. On exterior surfaces, any lead will oxidise. This is a natural phenomenon and cannot be avoided.



Lubrication

Lock – oil the locking points of the mechanism.

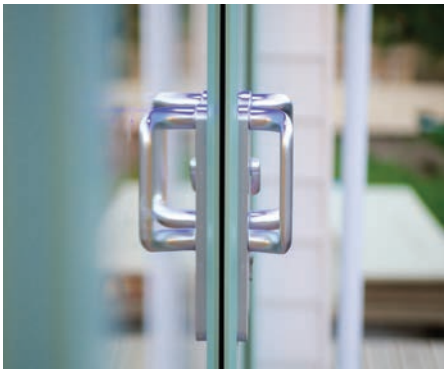
Lock cylinders should not be lubricated. They are packed with a special grease that can be broken down by some lubricants.



Frequency

We recommend that routine maintenance should be carried out at least twice a year. In areas of high exposure or marine environments, it may be necessary to do this more frequently.

Experts in **Patio** doors



Why **PatioMaster**

We're known as the experts in sliding doors. Our network of local teams specialises in delivering a blend of outstanding precision, quality, service and support.

The components we use are second to none, and our procedures ensure complete satisfaction. We use accredited systems, meet all standards, Building Regulations and comply fully with all CE marking requirements.

We're British, and our products are designed and manufactured entirely in the UK.

Working **with you** and **for you**

We're responsive, friendly and always perfectly in tune with the market. That's our promise.

Fabricators choose PatioMaster again and again. We reduce their stockholding costs and smooth their workflow, supplying everything their customers need.

Installers choose PatioMaster for quality that stands out, easy installation, trouble-free operation and the wide choice of configurations and colours.



The **facts** and the **figures**

Dimensions

Maximum aperture width 6 metres.
Maximum height: 2360mm.

Hardware

White, gold, brass, chrome, black or silver.
6-point locking system on all standard specifications.

Layouts

3 panels: 1 fixed – 2 sliding.
6 panels: 2 fixed – 4 sliding.

Ancillaries

Fully compatible range, including cills and frame packers.

Colours

28 colours and finishes.
Dual colour options to order.


Options

Mechanically jointed option. 24mm or 28mm glazing.
Chamfered or ovolo shaped sash upstand.

Materials

PVC-U and rigid aluminium composite.
Stainless steel track system, with edge-located rollers.
Low-line gaskets.
Hot-dipped galvanised mild steel reinforcing.





An **outstanding door**,
an expert team and
superb support



www.patiomaster.co.uk

